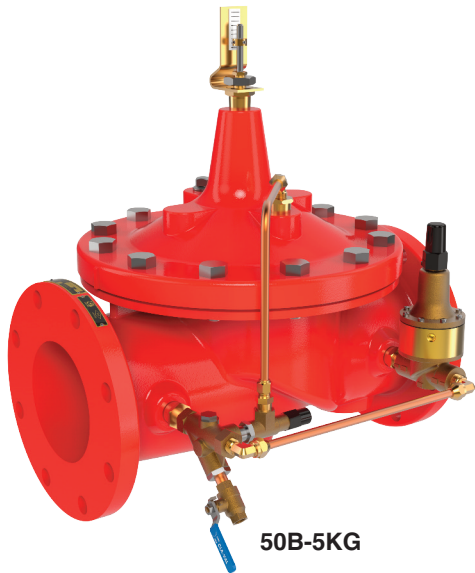




— MODEL — **50B-5KG**

Pump Suction Control Valve



50B-5KG



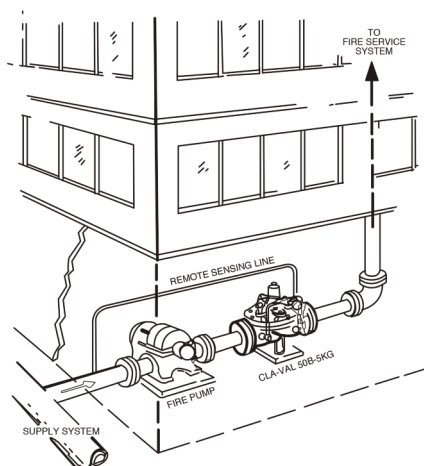
- Adjustable Opening Speed For Pump Suction Protection
- Pilot Control Provides Wide Flow Range With Minimal Pressure Variations
- Controlled Closing For System Protection
- Modulates Within 5% of Setting for Accurate Pressure Control
- Pressure Setting Adjustable
- Pressure Setting Not Affected by Pressure at Valve Discharge
- Now Available in Grooved Ends Sizes 3" - 8"

The Model 50B-5KG Pump Suction Control Valve is designed specifically for Fire Pump Suction Control Service. It modulates to maintain the pump discharge in relation to the suction head available, thus assuring that the suction head pressure does not fall below the pre-set minimum. The 50B-5KG can be supplied with optional internal and external epoxy coating of the main valve wetted surfaces.

Typical Installation

When there is a demand in the Fire System, the pump is started, delivering water from the supply source to the area of demand. To assure that the fire pump draw does not exceed the available water supply, the Model 50B-5KG, sensing the pump suction, modulates to prevent suction pressure from dropping below a pre-set minimum.

By maintaining minimum pressure requirements in the supply main, the main is protected from possible damage or backflow conditions. Also, a minimum supply pressure is provided for local fire apparatus.



Specifications

Sizes Globe: 3" - 10"
Angle: 3" - 10"

End Details 150 and 300 ANSI B16.42

Pressure Ratings 150 class - 250 psi Max.
300 class - 400 psi Max

Temperature Range Water, to +180°F Max.

Materials **Main valve body & cover**
Ductile Iron ASTM A-536

Main valve trim:

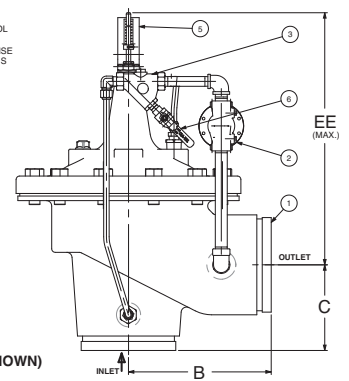
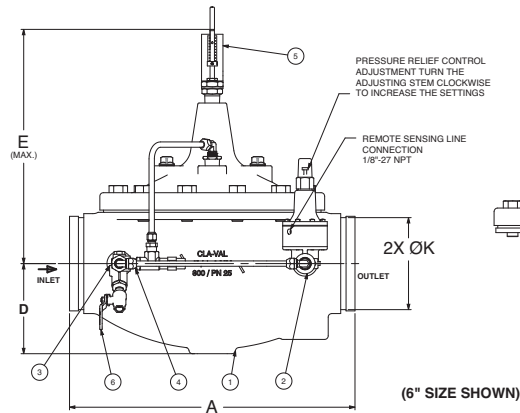
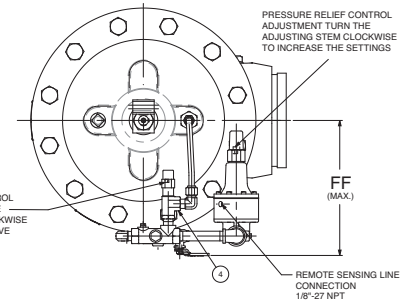
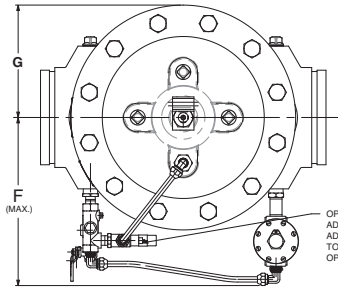
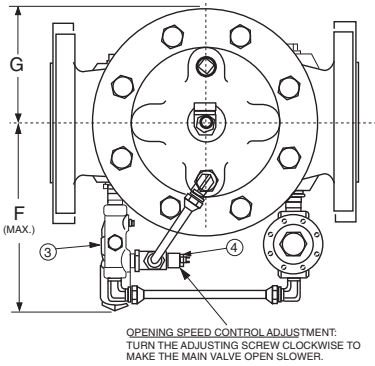
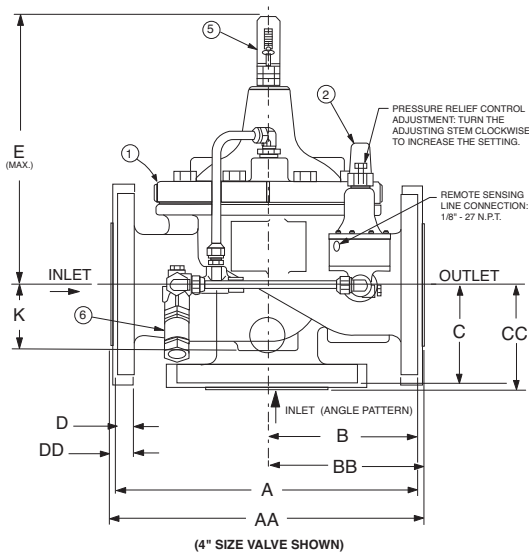
Brass QQ-B-626
Bronze Seat ASTM B61
Stainless Steel Stem 303
Delrin Sleeved

Pilot control system:

Cast Bronze ASTM B62 with
303 Stainless Steel trim

Adjustment Range Available in the following
pressure range only:
5 to 25 psi
Set at 10 psi

Dimensions (in Inches)



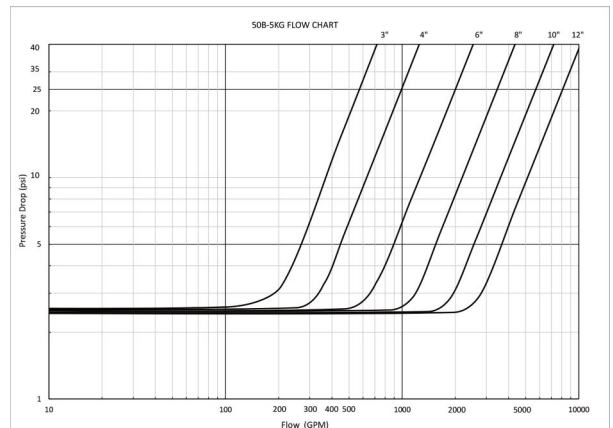
APPROVED

Sizes 3" - 10"

Valve Size	3"	4"	6"	8"	10"
A 150 Flanged	12.00	15.00	20.00	25.38	29.75
AA 300 Flanged	13.25	15.62	21.00	26.38	31.12
A Grooved End	12.50	15.00	20.00	25.38	--
B 150 Flanged	6.00	7.50	10.00	12.75	14.88
BB 150 Flanged	6.38	7.88	10.50	13.25	15.56
B Grooved End	6.00	7.50	10.00	--	--
C 150 Flanged	4.00	5.00	6.00	8.00	8.62
CC 150 Flanged	4.38	5.31	6.50	8.50	9.31
C Grooved End	4.25	5.00	6.00	--	--
D 150 Flanged (min.)	0.75	0.94	1.00	1.12	1.12
DD 150 Flanged (min.)	1.12	1.25	1.44	1.62	1.12
D Grooved End	3.62	4.50	6.31	7.81	--
E (max.)	15.75	17.75	20.25	23.00	--
E Grooved End (max.)	13.85	16.06	17.94	20.72	--
EE Grooved End (max.)	13.90	15.50	19.20	--	--
F (max.)	13.50	15.00	16.50	20.00	--
F Grooved End (max.)	9.90	10.75	12.05	13.40	--
FF Grooved End (max.)	8.38	9.00	9.75	--	--
G (max.)	4.62	5.75	7.88	10.00	--
G Grooved End	4.56	5.75	7.88	10.00	--
K	2.56	3.19	4.31	5.31	--
K Grooved End	3.344/3.326	4.334/4.314	6.455/6.433	8.441/8.416	--

Item No.	Description
1	100KCGVX Hytrol (Main Valve)
2	CRL5A Pressure Relief Control
3	X44A Strainer and Orifice Assembly
4	CV Flow Control (Opening)
5	X101C Valve Position Indicator
6	CK2 (Blow-Off Valve)

Flow Chart



CLA-VAL

1701 Placentia Avenue • Costa Mesa CA 92627 • Phone: 949-722-4800 • Fax: 949-548-5441 • E-mail: info@cla-val.com • Website cla-val.com
© Copyright Cla-Val 2019 Printed in USA Specifications subject to change without notice.

50B-5KG (R-05/2019)